



**WINKLER**  
STRUCTURES



# ***Agriculture***

[www.winklerstructures.com](http://www.winklerstructures.com)

*The*  
**No Compromise**  
*Fabric Structure*







# Agriculture

For 40 years, Winkler Structures has given farms an affordable option to protect their assets. Our standard and custom structures are designed with the farm in mind. Sleep easy knowing that your livestock, equipment, and feed are protected against even the harshest conditions.

## The Winkler Advantage

**Strong and resilient** – Our tensioned fabric and steel design enables our structures to withstand anything Mother Nature can throw at it. Our structures have been tested in the extreme snow, wind, rain, and heat conditions and are still standing after 20 years.

**Install is fast and simple** – When you need a structure we understand that you might need it right now! Many Winkler structures are easily constructed within 3-5 days.

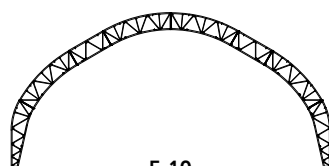
**Portable and storable** – Need a temporary storage solution and don't want waste time and money building a permanent structure? Winkler Structures can easily be deconstructed and stored until you need it again. Our steel frames are galvanized to prevent rust or corrosion while it's stored. The fabric covers can be easily rolled and stored alongside the steel.



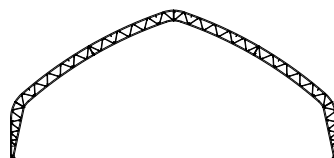


## Benefits

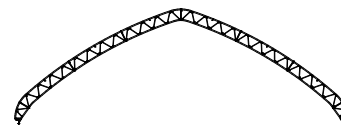
- ✓ Experience large savings vs traditional buildings
- ✓ 15-20 degrees cooler in summer
- ✓ 15-20 degrees warmer in winter
- ✓ 83% natural daylight transferred through the white cover
- ✓ 15 year warranty
- ✓ Cover designed to last 20+ years
- ✓ Natural Resources Conservation Service (NRCS) certified designs



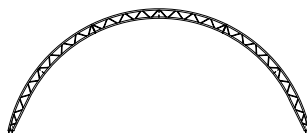
**E-10**  
42' - 72'



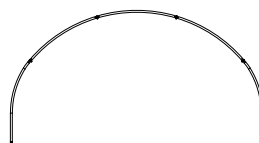
**Governor**  
50' - 120'



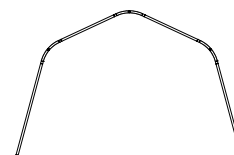
**Governor Low**  
40' - 100'



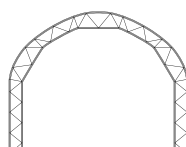
**Paramount Low**  
30' - 67'



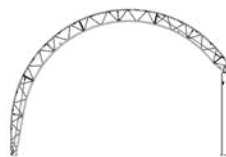
**QuickBuild**  
Dome  
20' - 42'



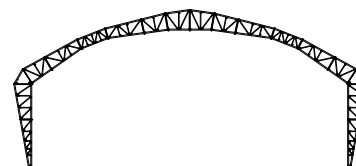
**QuickBuild**  
Utility  
14' - 24'



**Stratos**  
25' - 40'



**Open Side**  
30' - 60'



**Custom Sizes**  
Up to 200'



## Options

Winkler Structures has the ability to customize almost anything on your structure. If you don't see what you're looking for in the list below, just ask; there is a good chance Winkler Structures can make it happen.

- ▶ Man door frame
- ▶ Vent kits
- ▶ Ridge vents kits
- ▶ Eave kits
- ▶ Curtain systems
- ▶ Door systems
  - ▶ Roll up doors
  - ▶ Chain hoist doors
  - ▶ Accutrack doors
  - ▶ Cable doors
- ▶ Full, half-moon or custom end walls
- ▶ Vertical or horizontal tarp colour stripes
- ▶ Numerous base plate styles
- ▶ Truss end covers
- ▶ Sliding vent frame
- ▶ Drip edge addition
- ▶ Mesh vents
- ▶ Extending end walls
- ▶ Fire retardant material upgrade
- ▶ Interior liners



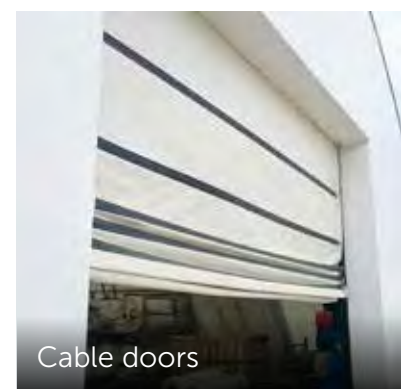
Roll up doors



Accutrack doors



Chain hoist doors



Cable doors



# Greenhouses



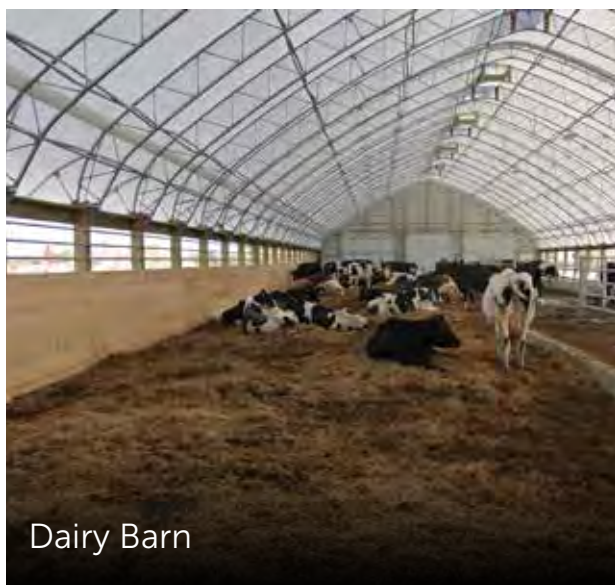
*Personal and commercial greenhouses available in various sizes.*



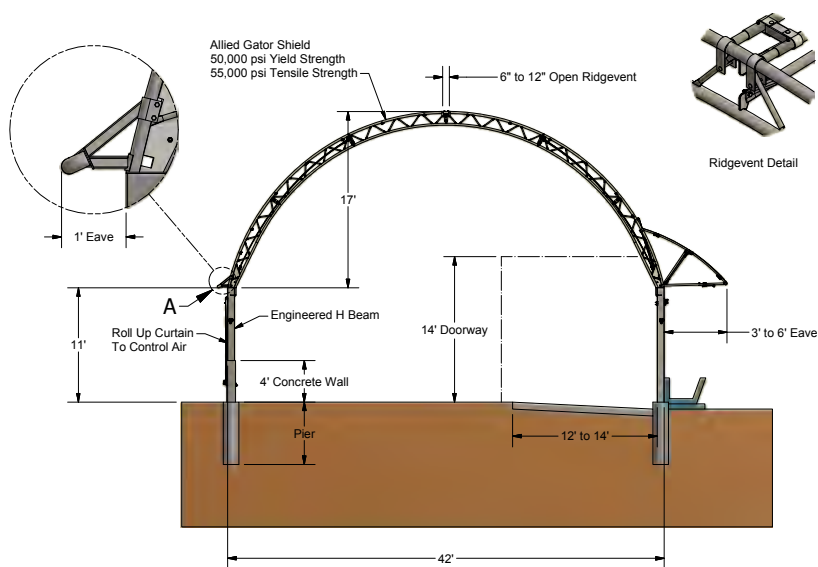
# Livestock Barns



Goat Barn



Dairy Barn



Chicken Housing



Calf Shelter



# Hay & Grain Storage



*Ask about our E-10 series, perfect for low occupancy general storage applications like hay and grain storage.*



# Equestrian



*Allow your horses to experience a bright, airy and open atmosphere with the natural lighting of a fabric building.*

*Ask about the option to connect fabric structures to existing buildings on your site.*



Horse Stables



# Equipment Storage



*Did you know fabric structures qualify for leasing? Not only can we design a structure for your farm operation, we can work with you on a payment plan that works with your budget.*



# Airplane Hangars



*Hangar packages include one solid end and your choice of door (fabric, bifold, or steel sliding).*





**WINKLER**  
STRUCTURES

Box 1268  
Hwy 14 and Greenfarm Rd  
Winkler, MB R6W 4B3  
Canada

**tf** 1.800.852.2638

**p** 1.204.325.9548

**f** 1.204.325.5434

**e** [info@winklerstructures.com](mailto:info@winklerstructures.com)

[www.WinklerStructures.com](http://www.WinklerStructures.com)